

WESTEN

The smart choice for your home comfort



pulsar D

SPARE PARTS CATALOGUE

- January 2015 -

HOW TO READ THE SPARE PARTS CATALOGUE

In the spare part catalogue, after the exploded diagrams, there are the components lists of the boilers; this is the meaning of the different columns:

Pos. Identification number of the component in the exploded diagram of the boiler.

Description Short description of the component.

Code BAXI S.p.A. code of the component.

Tab. XX XX is the exploded diagram number of the boiler taken into consideration.

Until 31th December 2011

From serial number Date (year and week) identifying the beginning of production of a component (taken from the serial number of the boiler).
e.g. B005: year 2000 (B identifies the decade 2000-2009; 0 identifies the year) – 5th week.
If the box is empty, the component is in use from the beginning of production of the boiler.

To serial number Date (year and week) identifying the end of production of a component (taken from the serial number of the boiler).
e.g. B012: year 2000 (B identifies the decade 2000-2009; 0 identifies the year) – 12th week.
If the box is empty, the component is still in use.

Interchangeable It identifies the interchangeability between the new component and the old one.
YES: components are interchangeable.
NO: components are not interchangeable.

From 1st January 2012

From serial number Date (year and week) identifying the beginning of production of a component (taken from the serial number of the boiler).
e.g. 1201: year 2012 (1 identifies the decade 2010-2019; 2 identifies the year) – 01th week.
If the box is empty, the component is in use from the beginning of production of the boiler.

To serial number Date (year and week) identifying the end of production of a component (taken from the serial number of the boiler).
e.g. 1225: year 2012 (1 identifies the decade 2100-2019; 2 identifies the year) – 25th week.
If the box is empty, the component is still in use.

Interchangeable It identifies the interchangeability between the new component and the old one.
YES: components are interchangeable.
NO: components are not interchangeable.

TABELLA COLLEGAMENTO CODICE CALDAIA - ESPLOSO TABLEAU CONNECTION CODEX CHAUDIERE - VUE ECLATEE BOILERS CONNECTION BOARD - EXPLODED VIEW

BOILER CODE	BOILER DESCRIPTION	EXPLODED REF.
CODICE CALDAIA	DESCRIZIONE CALDAIA	RIF. ESPLOSO
CODIGO CALDERA	DESCRIPCION CALDERA	REF. EXPLOSIONADO
CODE CHAUDIÈRE	DESCRIPTION CHAUDIÈRE	RÉF. EXPLOSÉE
CYH461143980/1	PULSAR D 1.14	Tab 375
CYH465143981/2	PULSAR D 1.14 F	Tab 376
CYH465143980	PULSAR D 1.14 F	Tab 376 Field Test
CYH461243980/1	PULSAR D 1.24	Tab 375
CYH465243981/2	PULSAR D 1.24 F	Tab 376
CYH465243980	PULSAR D 1.24 F	Tab 376 Field Test
CYH462243980/1	PULSAR D 24	Tab 366
CYH466243981/2	PULSAR D 24 F	Tab 365
CYH466243980	PULSAR D 24 F	Tab 365 Field Test

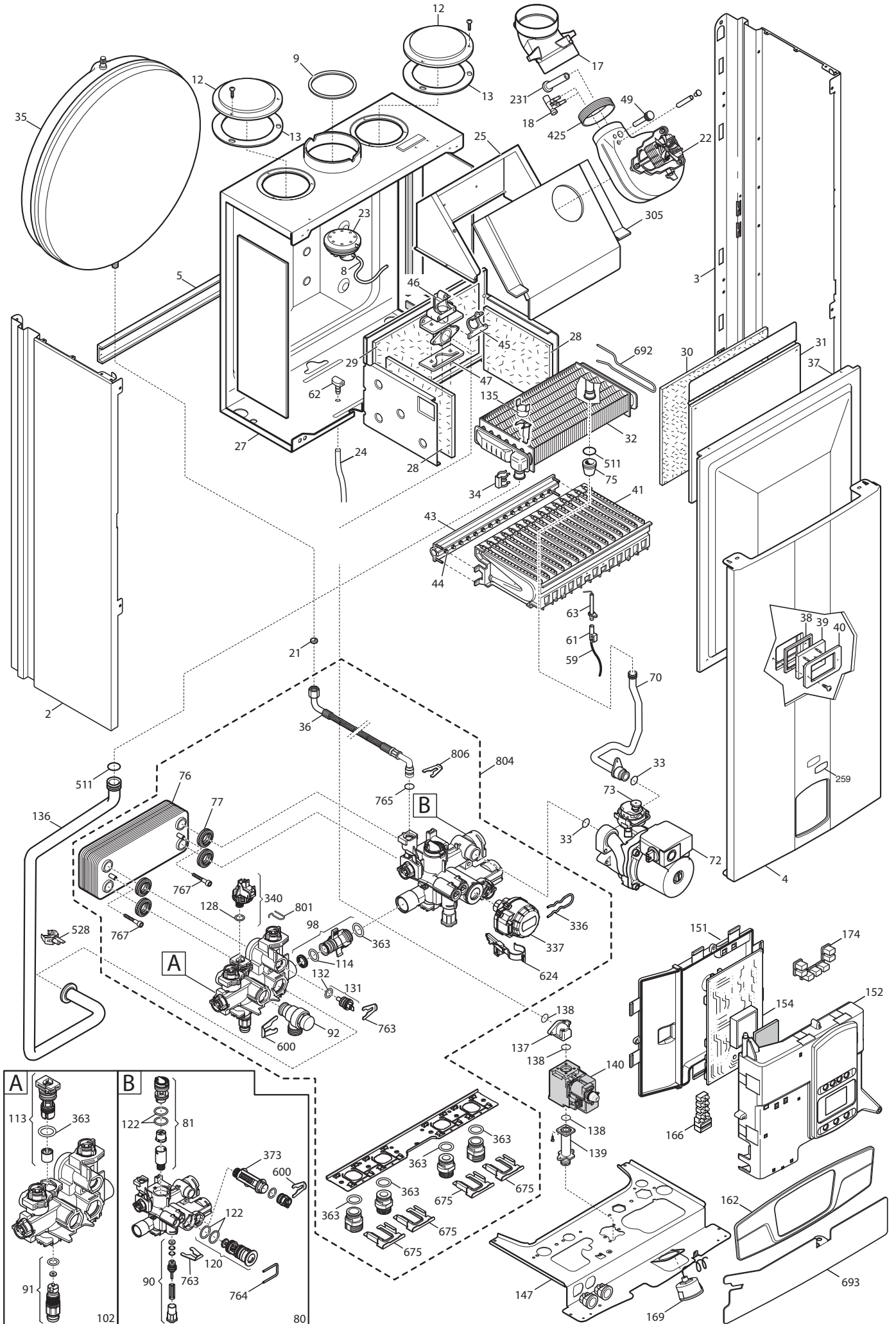
Pos	Code	Description code	CYH46243980/1							To serial number	From serial number	Interchangeable:				
			1.14	1.24	2.4	1.14 F	1.14 F	1.24 F	2.4 F							
2	5698660	LEFT PANEL ASSEMBLY ECO4 ATM.	•	•	•											
2	5698680	LEFT PANEL ASSEMBLY ECO4 FF				•	•	•	•	•	•					
3	5698650	RIGHT PANEL ASSEMBLY ECO4 ATM.	•	•	•											
3	5698670	RIGHT PANEL ASSEMBLY ECO4 FF				•	•	•	•	•	•					
4	628830	FRONTAL PANEL ASS. ECO4 ATM	•	•	•											
4	5117900	FRONTAL PANEL ECO4 WESTEN				•	•	•	•	•	•					
5	5117420	TRAVERSE SIDES CONNECTION FF				•	•	•	•	•	•					
5	5117460	TRAVERSE SIDES CONNECTION-ATM-	•	•	•											
8	5408080	PRESSURE SWITCH PIPE L=270				•	•	•	•	•	•					
9	5115860	RESTRICTOR AIR INTAKE D60/43							•		•					
9	5117740	FLUE REDUCTION d.78mm				•	•	•		•						
12	5108690	PLATE BLANKING				•	•	•	•	•	•					
13	5407400	SUCTION CAP GASKET				•	•	•	•	•	•					
17	5214290	BEND FLUE EMISSIONS ECO4				•	•	•	•	•	•					
18	5409580	PRESSURE SENSING VENTURI 80E				•	•	•	•							
18	5413850	PRESS.SENS.VENTURI SINGLE TAP								•	•					
21	5402050	WASHER-SEALING	•	•	•	•	•	•	•	•	•					
22	5678500	FAN 31W				•	•	•	•							
22	5682150	FAN								•	•					
23	628570	FLUE PRESS.SWITCH 90-75Pa HUBA							•		•					
23	628610	PRESS.SWITCH ASS. 0,68mbar HONEYW.							•		•			C121	YES	
23	628620	PRESS.SWITCH ASS. 0,9mbar HONEYW.							•		•					
23	628770	FLUE PRESS.SWITCH 70-60Pa HUBA							•		•			C144		
23	628800	FLUE PRESS.SWITCH 50-39Pa HUBA				•	•							1312		
23	5617550	SWITCH - PRESSURE							•		•					
23	5663820	PRESSURE SWITCH 80 ASS. IND.							•		•			C120		
23	710789900	PRESSURE SWITCH ASSEMBLY HUBA							•		•			1448	C145	YES
23	710790100	ASS. PRES. SWITCH 90-75Pa HUBA							•		•			1448		
23	711277100	FLUE PRESS. SWITCH 50-39Pa HUBA				•	•							1313	YES	
23	721890300	FLUE PRESS.SWITCH 70-60Pa HUBA							•		•			1449	YES	
23	721890500	FLUE PRES. SWITCH 90-75Pa HUBA							•		•			1449	YES	
24	5407930	PIPE - VALVE COMPENSATION				•	•	•	•	•	•			B923		
24	5414320	PIPE-VALVE COMPENS.4,5x8 L=170				•	•	•	•	•	•			B924	YES	
25	5113800	CONVEYOR ASSEMBLY				•	•			•						
25	5118150	CONVEYOR ASSEMBLY ECO4 225mm					•		•		•					
27	5698630	COMBUST. CHAMBER ASS. ECO4 ATM		•	•											
27	5698640	COMBUST. CHAMBER ASS. ECO4 FF				•		•		•						
27	5699130	COMB.CHAMBER ASS.ECO4 ATM 14KW	•													
27	5700940	COMB. CHAMBER ASS. ECO4 225							•		•					
27	5702250	COMB.CHAMBER ASS.ECO4 225 14kW						•								
28	5213210	INSULATING PANEL				•	•	•	•	•	•					

Pos	Code	Description code	Part Numbers									To serial number	From serial number	Interchangeable:	
			CYH461143980/1 1.14	CYH461243980/2 1.24	CYH46243980/1 24	CYH465143980 1.14 F	CYH465143981/2 1.14 F	CYH465243980 1.24 F	CYH465243981/2 1.24 F	CYH466243980 24 F	CYH466243981/2 24 F				
28	5213220	INSULATING PANEL	•	•	•										
29	5213280	INSULATING PANEL	•	•	•	•		•		•				B506	YES
29	5214630	INSULATING REAR PANEL FF 225						•		•		•			
30	5213370	INSULATING PANEL				•			•		•				
30	5213380	FRONTAL INSULATING PANEL	•	•	•										
30	5214700	INSUL.FRONT.PANEL ECO4 FF 225						•		•		•			
31	612970	COMB. CHAMBER FRONTAL PANEL				•			•		•				
31	615370	COMBUST.CHAMBER FRONTAL PANEL	•	•	•										
31	5700980	COMB.CH.FRONT.PANEL ECO4 FF 225						•		•		•			
32	5677660	PRIMARY EXCHANGER WITH CLIPS	•	•	•	•			•		•				
32	5700950	HEAT EXCHANG. H2O/GAS ECO4 225						•		•		•			
33	5403130	O-RING 22 x 3	•	•	•	•		•		•		•		1311	
33	710963000	OR 21,5X3 EP70 TFL	•	•	•	•		•		•		•		1312	YES
34	5113650	PRIMARY EXCHANGER FIXING CLIP	•	•	•	•		•		•		•			
35	5693900	RECT.EXPANSION VESSEL 6I-CIMM-	•	•	•										
35	5693920	CIRC.EXPANS.VESSEL 6I CIMM						•		•		•		C013	YES
35	5695230	CIRC.EXPANS.VESSEL 6I ZILMET						•		•		•		C012	
36	5698830	PIPE EXPANSION VESSEL	•	•	•	•		•		•		•			
37	5663830	SEALED CHAMBER FRONT PANEL						•		•		•			
38	5401610	VIEWING WINDOW GASKET						•		•		•			
39	5203930	VIEWING WINDOW						•		•		•			
40	5103360	SURROUND - VIEWING WINDOW						•		•		•			
41	5663710	BURNER ASSEMBLY (13 ELEM.)		•	•					•		•			
41	5665980	BURNER ASSEMBLY PERFORMA 12e	•					•							
41	5700530	BURNER ASSEMBLY 11 ELEMENTS						•		•		•			
43	5665960	GAS RAMP 10 HOLES d.1,18	•					•							
43	5698690	GAS RAMP 13HOLES/INJECT. d1,18		•	•										
43	5698700	GAS RAMP 13HOLES/INJECT. d1,28								•		•			
43	5700500	GAS RAMP 11 HOLES/INJECT d.1,35								•		•			
43	5702260	GAS RAMP 11HOLES/INJECT. d1,18								•					
44	5666400	NATURAL GAS INJECTORS KIT						•		•		•			
44	5669460	NATURAL GAS INJECTORS KIT	•	•	•										
44	5680020	TRANSFORMATION KIT G31	•	•	•	•		•							
44	5704730	KIT TRANSF.GAS G31 11x0,85								•		•			
45	5407940	GASKET-BURNER MANIFOLD	•	•	•	•		•		•		•			
46	5657180	ADAPTOR-MANIFOLD	•	•	•	•		•		•		•			
47	5407810	GASKET-MANIFOLD ADAPTOR						•		•		•			
49	5409520	HOSE ADAPTER CAP						•		•		•			
59	8612400	IGNITION CABLE L=250 ECO4	•	•	•	•		•		•		•			
61	5407830	INSULATION BOOT - ELECTRODE	•	•	•	•		•		•		•			
62	5409570	SEALED CHAMBER HOSE ADAPTER						•		•		•			
63	8422570	ELECTRODE - IGNITION	•	•	•	•		•		•		•			
70	5698720	PIPE PUMP/EXCHANGER ATM BITRON	•	•	•										
70	5698730	PIPE PUMP/EXCHANGER FF BITRON						•		•		•			

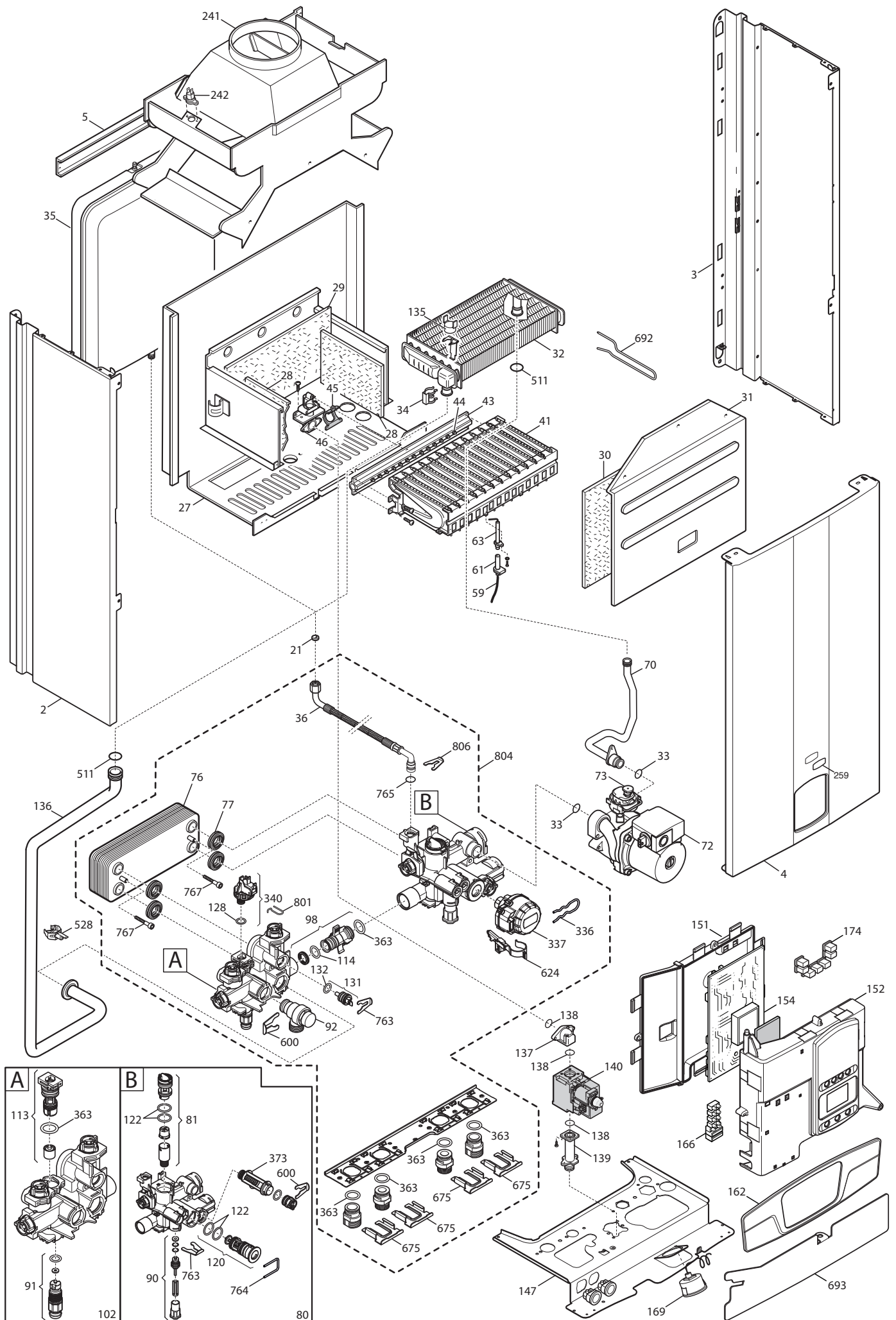
pulsar D

Pos	Code	Description code	CYH461143980/1 1.14	CYH461243980/2 1.24	CYH46243980/1 24	CYH465143980 1.14 F	CYH465143981/2 1.14 F	CYH465243980 1.24 F	CYH465243981/2 1.24 F	CYH466243980 24 F	CYH466243981/2 24 F	To serial number	From serial number	Intercha ngeable:	
242	616160	FLUE SAFETY THERMOSTAT 70ø		•	•										
259	5699020	BRAND WESTEN PULSAR DIGIT	•	•	•	•	•	•	•	•	•				
305	5113810	EVACUATION SMOKE CHIMNEY				•		•		•					
305	5118210	FAN BRACKET ECO4 225					•		•		•				
336	710047400	CLIP - 3WV MOTOR HEAD			•					•	•				
337	710047300	3WV MOTOR HEAD			•					•	•				
340	710048500	ON/OFF CH PRESSURE SWITCH	•	•	•	•	•	•	•	•	•	1448			
340	721384000	ON/OFF CH PRESSURE SWITCH	•	•	•	•	•	•	•	•	•		1449	YES	
363	710045300	O-RING d.17,96X2,62	•	•	•	•	•	•	•	•	•				
373	710047100	CH FILTER	•	•	•	•	•	•	•	•	•				
425	5412270	GASKET FAN HT				•	•	•	•	•	•				
511	5404600	O.R. 17,86x2,62	•	•	•	•	•	•	•	•	•				
528	8435500	NTC SENSOR D18-ITS2410201/0-	•	•	•	•	•	•	•	•	•				
600	710045400	CLIP FLAT d.18	•	•	•	•	•	•	•	•	•				
624	710046200	HALL SENSOR ASSY			•					•	•	1219			
624	710976600	HALL SENSOR ASSY			•					•	•		1220	YES	
675	710046100	CLIP BRASS ADAPTOR	•	•	•	•	•	•	•	•	•				
692	5114360	PRIMARY EXCHANGER CLIPS	•	•	•			•		•					
693	5117440	PRINTED CNTR. PANEL PROTECTION	•	•	•	•	•	•	•	•	•				
763	710046700	CLIP FLAT d.12	•	•	•	•	•	•	•	•	•				
764	710047500	CLIP U d.3			•					•	•				
765	710045700	O-RING d.9,19 X 2,62	•	•	•	•	•	•	•	•	•		1314	YES	
765	710069700	O-RING 9,19X2,62 EPDM	•	•	•	•	•	•	•	•	•	1313			
767	710046900	PTP EXCH FIXING SCREW			•					•	•				
801	710048700	CLIP CH PRESSURE SWITCH	•	•	•	•	•	•	•	•	•				
804	5698760	HYDRAULIC GROUP COMBI BITRON			•					•					
804	5699200	HYDRAULIC GROUP ONLY HEATING	•	•		•	•	•	•						
806	5117880	CLIP d.10 BITRON	•	•	•	•	•	•	•	•	•				
999	8414540	CABLE ROOM TH	•	•	•	•	•	•	•	•	•				
999	8414620	POWER CABLE	•	•	•	•	•	•	•	•	•				
999	8419040	CABLE - EARTH	•	•	•	•	•	•	•	•	•				
999	8513650	LOW VOLTAGE WIRING ECO4 ATM	•	•	•										
999	8513660	FAN WIRING ECO4				•	•	•	•	•	•				
999	8513670	LOW VOLTAGE WIRING ECO4 FF				•	•	•	•	•	•				
999	8513890	HIGH VOLTAGE WIRING ECO4 SIT			•					•	•				
999	8513900	HIGH VOLTAGE WIRING ECO4 HON.			•					•	•				
999	8513910	LOW VOLTAGE WIRING ECO4 BITRON			•					•	•				
999	8513930	HIGH VOLT.WIRING ECO4 SIT MON.	•	•		•	•	•	•						
999	8513940	HIGH VOLT.WIRING ECO4 HON.	•	•		•	•	•	•						
999	8513950	LOW VOLT.WIRING ECO4 MONOTHER.	•	•		•	•	•	•						

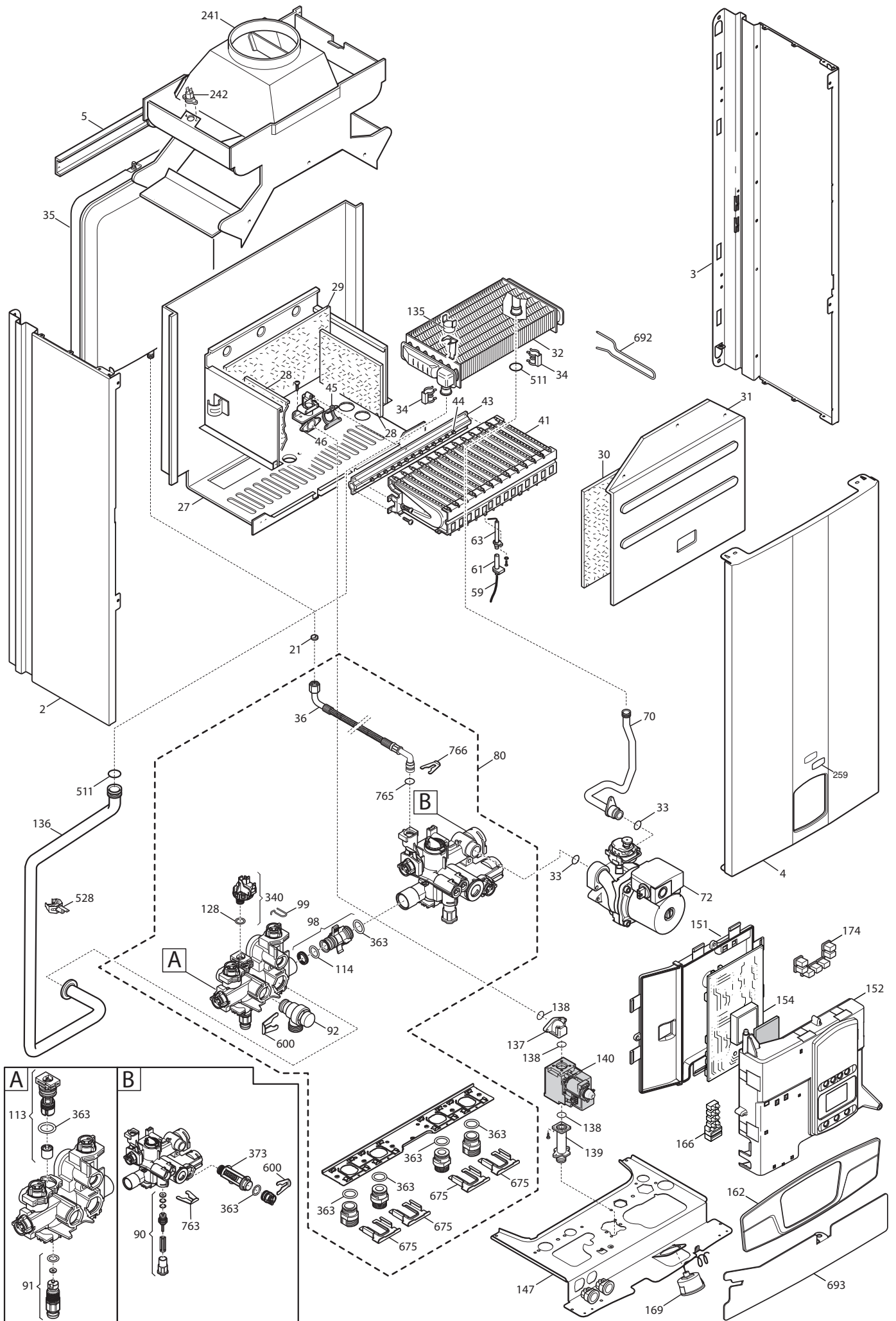
Tab 365



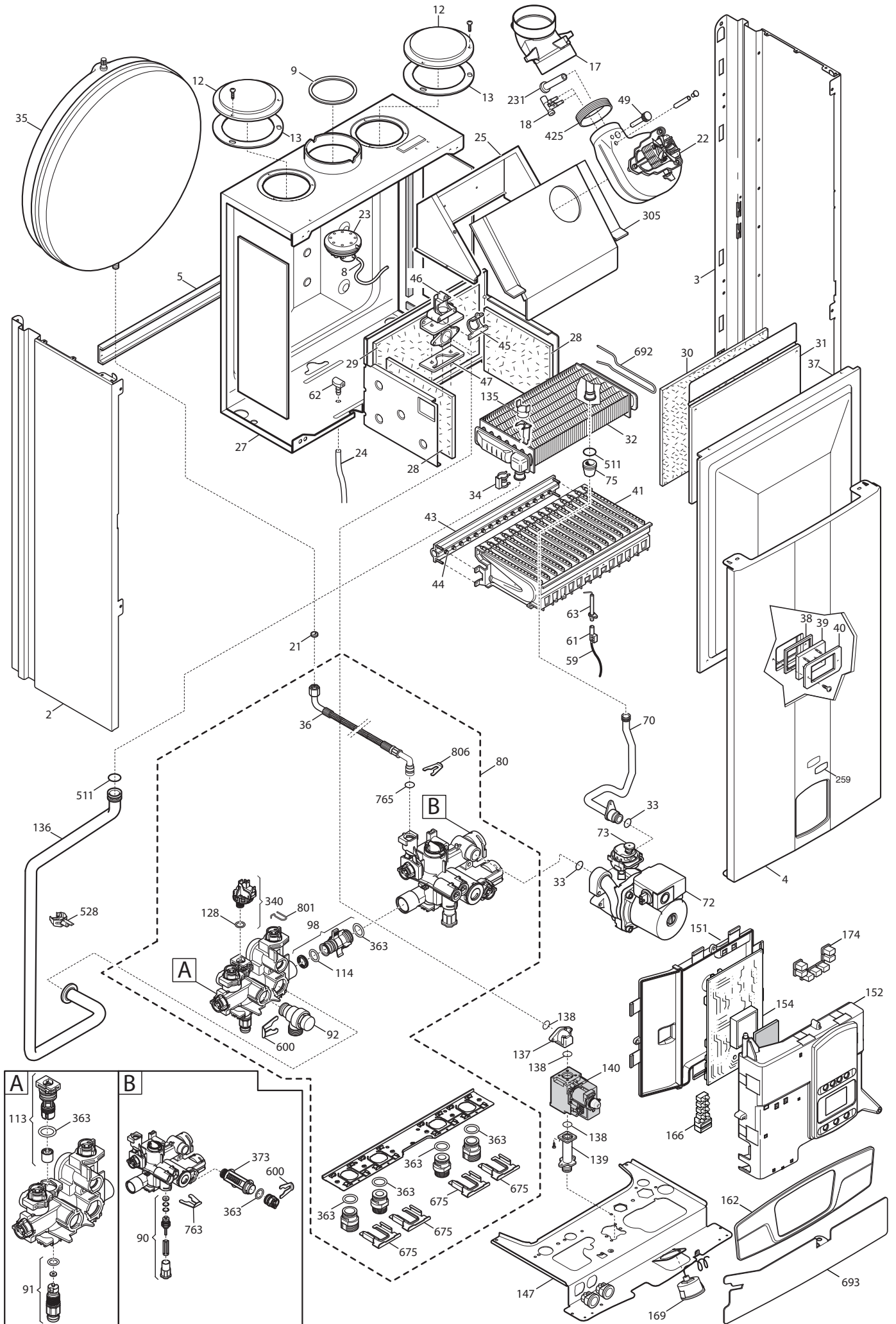
Tab 366



Tab 375



Tab 376



WESTEN

BAXI S.p.A.
Via Trozzetti, 20
36061 BASSANO DEL GRAPPA (VI) ITALY
Tel. +390424517111 Telefax +390424517379
Web site: www.baxi.it e-mail: service@baxi.it